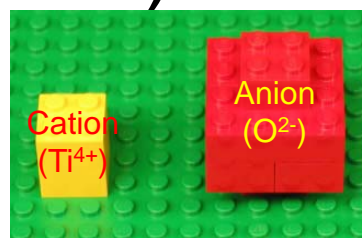
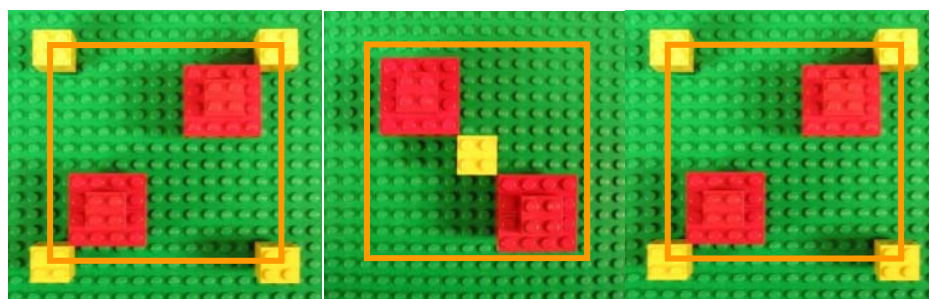


TiO₂ (rutile form)

LEGO units representing ions in this structure:



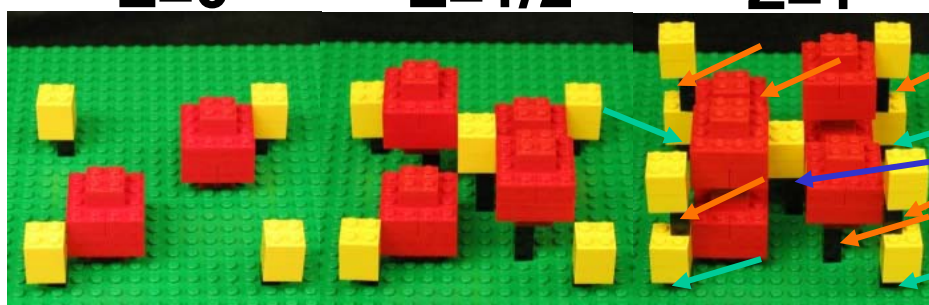
Whole ions:



Z=0

Z=1/2

Z=1



These are supports made from two 1x1 bricks (orange)

These are supports made from three 1x1 bricks (blue)

These are supports made from one 1x1 brick (teal)

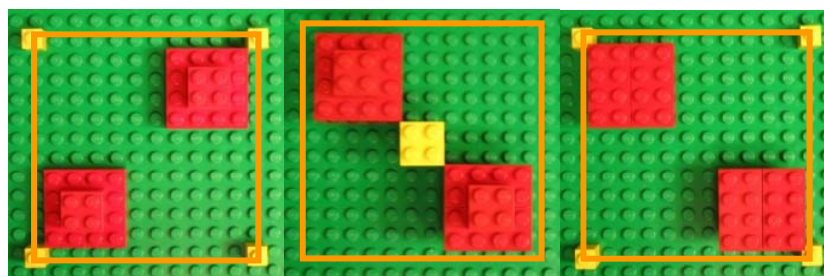
This model Whole ion requires:

17 black 1x1 bricks
18 yellow 2x2 bricks
24 red 2x4 bricks
12 red 2x2 bricks

This model Unit cell requires:

6 yellow 1x1 bricks 16 red 2x4 bricks
2 yellow 2x2 bricks
8 black 1x1 bricks
8 red 2x2 bricks

Unit cell:



Z=0

Z=1/2

Z=1



These are supports made from two 1x1 bricks (orange)